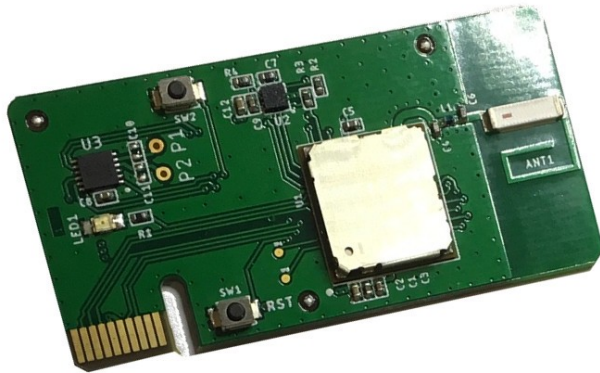


Ultra low power DASH7 Sub-GHz Localization Tag



Description

- The WOLT is a DASH7 localization tag operating in the 868-915MHz ISM band with fully integrated off-the-shelf options and motion detection sensor.
- It functions both over long-range (global) LoRaWAN and mid-range (private) DASH7 networks.
- FCC & CE / RED certification.
- NFC identification & configuration.
- FOTA over DASH7.
- Wizzilab product line at www.wizzilab.com/products

Features

- Battery powered DASH7 / LoRaWAN localization tag with years-long lifetime.
- Operates in the 868-915 MHz ISM band.
- Bi-directional DASH7 v1.2 Industrial IoT connectivity with 1s latency (www.dash7-alliance.org)
- Bi-directional LoRaWAN connectivity (uplink driven).
- Embedded low power motion detection sensor.
- Embedded 868-915MHz chip antennas.
- IoT modulation schemes GFSK 9.6 / 55.6 / 167.7 kbps or LoRa™ SF8 to SF12.
- Output power up to +14 dBm (with the embedded chip antenna)
- NFC connectivity..
- Operating temperature: -40 °C to 85 °C

Applications

- Combined indoor / outdoor assets localization
- Security systems
- Industrial monitor and control
- Internet of things (IoT)

Table of Contents

Table of Contents.....	2
List of tables.....	2
1 Hardware specification.....	3
1.1 Recommended operating conditions.....	3
1.2 Absolute maximum ratings(1).....	3
1.3 Sensors and Actuators.....	3
1.4 Battery.....	4
2 Casing and Battery.....	5
2.1 Off-the-shelf Option.....	5
2.2 Custom Options.....	5
3 IoT wireless characteristics.....	6
3.1 Certifications.....	6
3.2 Data rates.....	6
3.3 Transmitting power.....	7
3.4 Receiver sensitivity.....	7
4 Application.....	8
4.1 Indoor / Outdoor Tracker.....	8
4.2 Ready to deploy.....	8
4.3 Firmware.....	10
5 The WOLT Family.....	11
6 Ordering information.....	12
7 Revision history.....	13

List of tables

Table 1. Recommended operating conditions.....	3
Table 2. Absolute maximum ratings.....	3
Table 3. Lifetime on 3.0V LiMnO ₂ with 1500mAh capacity.....	4
Table 4. DASH7 Data rates.....	6
Table 5. DASH7 Transmission power.....	7
Table 6. DASH7 Reception sensitivity.....	7
Table 7. Document revision history.....	10

1 Hardware specification

1.1 Recommended operating conditions

Table 1. Recommended operating conditions

Symbol	Parameter	Min.	Typ.	Max.	Units
T _A	Operating ambient temperature range	-40	-	85	°C

1.2 Absolute maximum ratings⁽¹⁾

Table 2. Absolute maximum ratings

Symbol	Parameter	Min.	Typ.	Max.	Units
T _{STG}	Storage temperature range	-40	-	85	°C

(1) Stresses beyond those listed under absolute maximum ratings may cause permanent damage to the device. These are stress ratings only and functional operation of the device at these or any other conditions beyond those indicated under recommended operating conditions is not implied. Exposure to absolute–maximum–rated conditions for extended periods may affect device reliability.

1.3 Sensors and Actuators

Accelerometer

On board ultra low power 3 axis accelerometer.

Battery

On board battery measure circuit.

Buttons

On board hardware reset and general purpose button.

LED

On board red LED.

1.4 Battery

Table 3. Lifetime on 3.0V LiMnO₂ with 1500mAh capacity

Symbol	Parameter	Min.	Typ. ⁽¹⁾	Max.	Units
T _{LIFE-ACTUATOR}	Motion sensor ON	-	3	-	years

	D7A downlink with 1s latency				
$T_{\text{LIFE-TAG}}$	Motion sensor ON Uplink driven downlink.	-	6	-	years

(1) 60 s per day cumulative transmission time (40 LoRaWAN uplink messages with SF12 LoRa modulation or 1500 D7A uplink messages with GFSK modulation at 55 kbps).

2 Casing and Battery

2.1 Off-the-shelf Option

The WOLT is proposed off-the-shelf in a non-transparent 58 x 32 x 14 mm black or grey casing and powered with a flat 40 x 24 x 7 mm LiMnO₂ battery with 1500 mAh capacity.



2.2 Custom Options

The WOLT can be fitted into custom transparent or non transparent casing. For more information, please contact us at : contact@wizzilab.com

3 IoT wireless characteristics

3.1 Certifications

ECC/RED

If deployed in Europe, the WOLT is provided with ECC/RED certified DASH7/LoRaWAN (TTN) network profiles.

FCC

If deployed in North America, the WOLT is provided with FCC certified DASH7/LoRaWAN (TTN) network profiles.

3.2 Data rates

The DASH7 modem has several data rates and modulation scheme available to better fit any kind of application.

Table 4. DASH7 Data rates

Modulation scheme	Parameter	Rate	Data Rate	Units
GFSK	ECC and FCC	High	166700	bps
	ECC and FCC	Normal	55600	bps
	ECC and FCC	Low	9600	bps
LoRa	ECC and FCC	SF8	3125	bps
	ECC and FCC	SF10	980	bps
	ECC only	SF11	440	bps
	ECC only	SF12	250	bps

3.3 Transmitting power

Table 5. DASH7 Transmission power

Condition	Max TX power	Units
ECC/RED regulations	+14	dBm
FCC regulations	+14	dBm
Non regulated	+14	dBm

3.4 Receiver sensitivity

Table 6. DASH7 Reception sensitivity

Modulation scheme	Rate	Typical Sensitivity	Units
GFSK	High	-105.0	dBm
	Normal	-110.0	dBm
	Low	-117.5	dBm
LoRa	SF8	-125.5	dBm
	SF10	-131.0	dBm
	SF11	-133.5	dBm
	SF12	-135.5	dBm

3.5 Ranging

Table 7. Ranging error

Symbol	Parameter	Min.	Typ.	Max.	Units
$E_{\text{DIST-D7A}}$	Power attenuation (link budget) ranging error (1)	-	30	-	m
$E_{\text{DIST-LWAN}}$	Power attenuation (link budget) ranging error (1) with TDOA enhancement	-	1000	-	m

(1) Highly depends on anchor / gateway density, line-of-sight conditions, operator.

4 NFC Connectivity

TBD

5 Application

5.1 Indoor / Outdoor Tracker

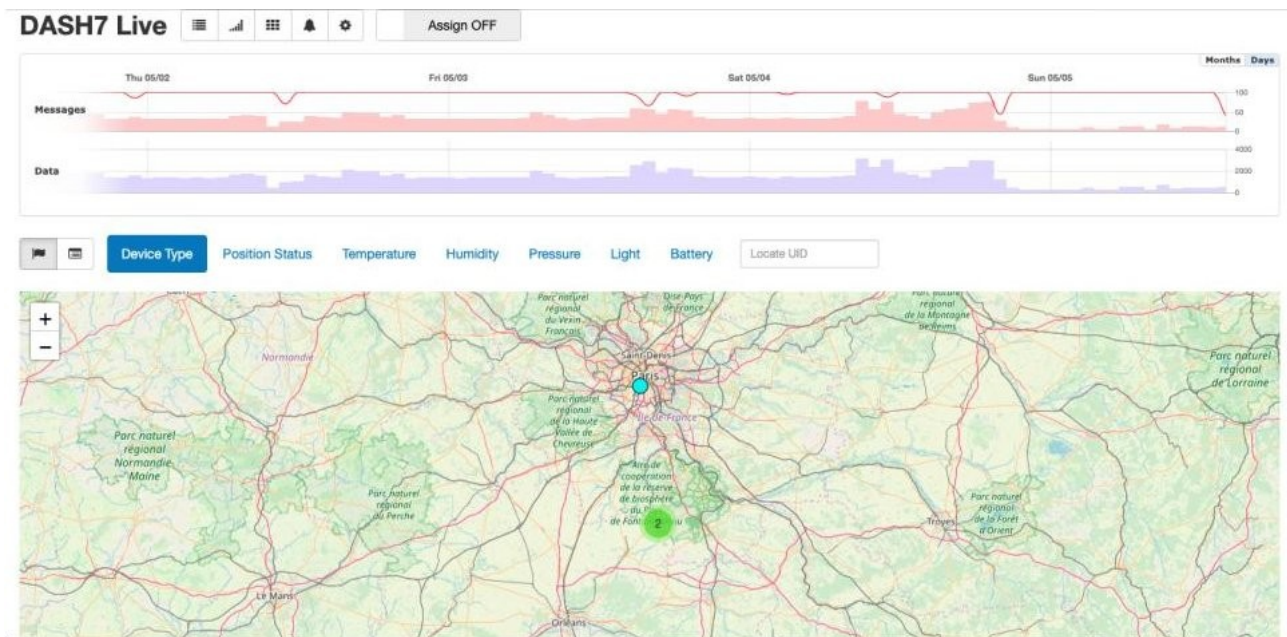
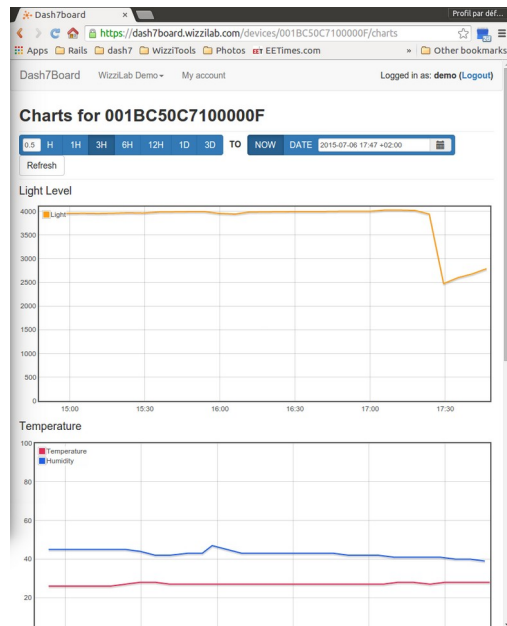
The WOLT can be used for efficient low-cost combined indoor-outdoor tracking due to the combination of long / mid range connectivity. It is also useful for identification due to its NFC connectivity.



5.2 Ready to deploy

The WOLT is suited for proof of concept, pilot and volume applications. By default, it is provisioned with LoRaWAN credentials for TTN (www.thethingsnetwork.org). For DASH7 communication, WizziLab provides infrastructure for easy D7A network deployment. The WOLT-D7A seamlessly connects to the WizziLab's DASH7 Industrial IoT platform.

For details visit our website : www.wizzilab.com/products



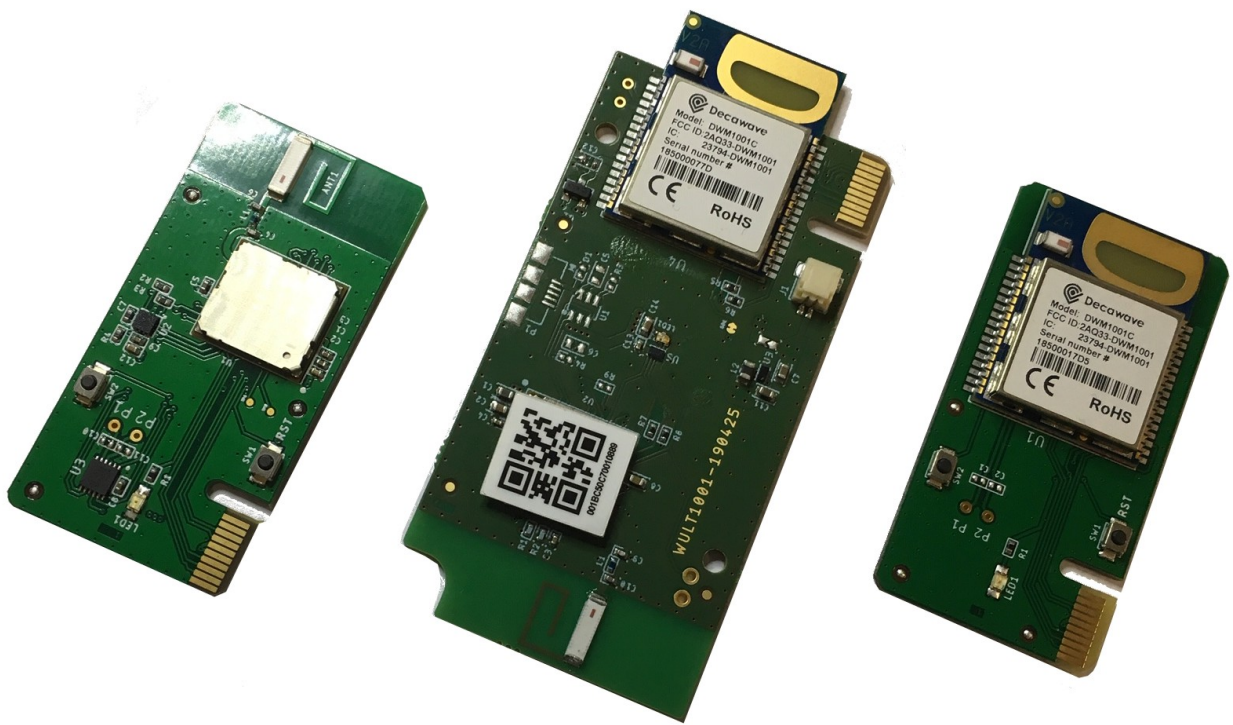
DASH7 Access Point (gateway) and Network Management Platform
(<https://dash7board.wizzilab.com>)

5.3 Firmware

The WOLT is provided with highly configurable firmware, allowing to select beacon rates, beacon conditions (motion detection, ...) and beacon networks (LoRaWAN and/or D7A). It additionally can scan and report for D7A anchors. Downlink access over D7A and LoRaWAN is available for static / dynamic configuration, FOTA and actuation (LED blinking). NFC identification is available as well.

6 The WOLT Family

The WOLT trackers family also includes an ultra wide band tracker, WOLT-UWB and a dual mode UWB/FSK/LORA tracker.



WOLT-D7A, Combined WOLT-D7A-UWB and WOLT-UWB tags

For details visit our website : www.wizzilab.com/products

7 Ordering information

Contact us at : contact@wizzilab.com

Or visit our website: <http://www.wizzilab.com/products>

8 Revision history

Table 8. Document revision history

Date	Revision	Changes
2019-09-09	1.0	Document creation.