

Ultra low power DASH7 UWB Localization Tag



- Bi-directional DASH7-UWB v1.2 Industrial IoT connectivity
- Supports two-way and time-difference of arrival (TDOA) ranging with up to 10 cm accuracy with optimized low power figures. Can be event-driven by the sub-GHz radio.
- ECC / FCC compliant 802.15.4a UWB physical layer @ 110 and 850 kbps on channel 5 (6.4 GHz)
- NFC & BTLE connectivity.

Applications

- Indoor assets localization
- Security systems
- Industrial monitor and control
- Internet of things (IoT)
- WizziLab product line at www.wizzilab.com/products

Description

- DASH7-UWB battery powered localization tag with years-long lifetime.
- Fully integrated off-the-shelf options and motion detection sensor.
- Functions over short range D7A-UWB networks.
- Identification & configuration over NFC & BTLE
- FOTA over DASH7-UWB.
- Operating temperature: -40 °C to 85 °C

UWB modem

- Based on the DWM1001 hardware
- Operates in the 6.4 GHz band
- Embedded PCB antenna.
- Embedded low power motion detection sensor.

Table of Contents

Table of Contents.....	2
List of tables.....	2
1 Hardware specification.....	3
1.1 Recommended operating conditions.....	3
1.2 Absolute maximum ratings ⁽¹⁾	3
1.3 Sensors and Actuators.....	3
1.4 Battery.....	4
2 Casing and Battery.....	5
2.1 Off-the-shelf Option.....	5
2.2 Custom Options.....	5
3 UWB modem.....	6
3.1 Certifications.....	6
3.2 Data rates.....	6
3.3 Transmitting power.....	6
3.4 Ranging.....	6
4 NFC & BTLE connectivity.....	7
5 Application.....	8
5.1 Indoor Tracker.....	8
5.2 Ready to deploy.....	8
5.3 Firmware.....	10
6 The WOLT Family.....	11
7 Ordering information.....	12
8 Revision history.....	13

List of tables

Table 1. Recommended operating conditions.....	3
Table 2. Absolute maximum ratings.....	3
Table 3. Lifetime on 3.0V LiMnO ₂ with 1500mAh capacity.....	4
Table 4. DASH7 Data rates.....	6
Table 5. DASH7 Transmission power.....	7
Table 6. DASH7 Reception sensitivity.....	7
Table 7. Document revision history.....	10

1 Hardware specification

1.1 Recommended operating conditions

Table 1. Recommended operating conditions

Symbol	Parameter	Min.	Typ.	Max.	Units
T _A	Operating ambient temperature range	-40	-	85	°C

1.2 Absolute maximum ratings⁽¹⁾

Table 2. Absolute maximum ratings

Symbol	Parameter	Min.	Typ.	Max.	Units
T _{STG}	Storage temperature range	-40	-	85	°C

(1) Stresses beyond those listed under absolute maximum ratings may cause permanent damage to the device. These are stress ratings only and functional operation of the device at these or any other conditions beyond those indicated under recommended operating conditions is not implied. Exposure to absolute–maximum–rated conditions for extended periods may affect device reliability.

1.3 Sensors and Actuators

Accelerometer

On board ultra low power 3 axis accelerometer.

Temperature

On board temperature sensor.

Battery

On board battery measure circuit.

Buttons

On board hardware reset and general purpose button.

LED

On board red LED.

1.4 Battery

Table 3. Lifetime on 3.0V LiMnO₂ with 1500mAh capacity

Symbol	Parameter	Min.	Typ.	Max.	Units
T _{LIFE}	Motion sensor ON uplink-driven downlink UWB localization	-	3	-	years

2 Casing and Battery

2.1 Off-the-shelf Option

The WOLT is proposed off-the-shelf in a non-transparent 58 x 32 x 14 mm black or grey casing respecting the IP65 specification of IEC 529 (Dust and Hose-proof) and powered with a flat 40 x 24 x 7 mm LiMnO₂ battery with 1500 mAh capacity.



2.2 Custom Options

The WOLT can be fitted into custom transparent or non transparent casing and supports input voltages from 2.4V to 5V (DC-DC option) allowing to adapt the battery capacity to the use case. For more information, please contact us at : contact@wizzilab.com

3 UWB modem

3.1 Certifications

Certification-ready firmware based on DWM1001 hardware.

3.2 Data rates

The DASH7 modem has several data rates and modulation scheme available to better fit any kind of application.

Table 4. DASH7-UWB data rates

Modulation scheme	Parameter	802,154a channel	Data Rate	Units
UWB	ECC and FCC	#5 (6.4 GHz)	110000	bps
	ECC and FCC	#5 (6.4 GHz)	850000	bps

3.3 Transmitting power

Table 5. DASH7-UWB transmission power

Condition	Max TX power	Units
ECC/RED regulations	+16	dBm
FCC regulations	+16	dBm
Non regulated	+31	dBm

3.4 Ranging

Table 6. DASH7-UWB ranging error

Symbol	Parameter	Min.	Typ.	Max.	Units
$E_{\text{DIST-TWR}}$	Two-way ranging error (1)	-	30	-	cm
$E_{\text{DIST-TDOA}}$	Time difference of arrival ranging error (2)	-	30	-	cm

(1) two-way ranging by time of flight estimation without preliminary clock synchronization between the tag and the anchor, according to Decawave's application note APS013. (2) Depends on inter-anchors' synchronization accuracy

4 NFC & BTLE connectivity

TBD

5 Application

5.1 Indoor Tracker

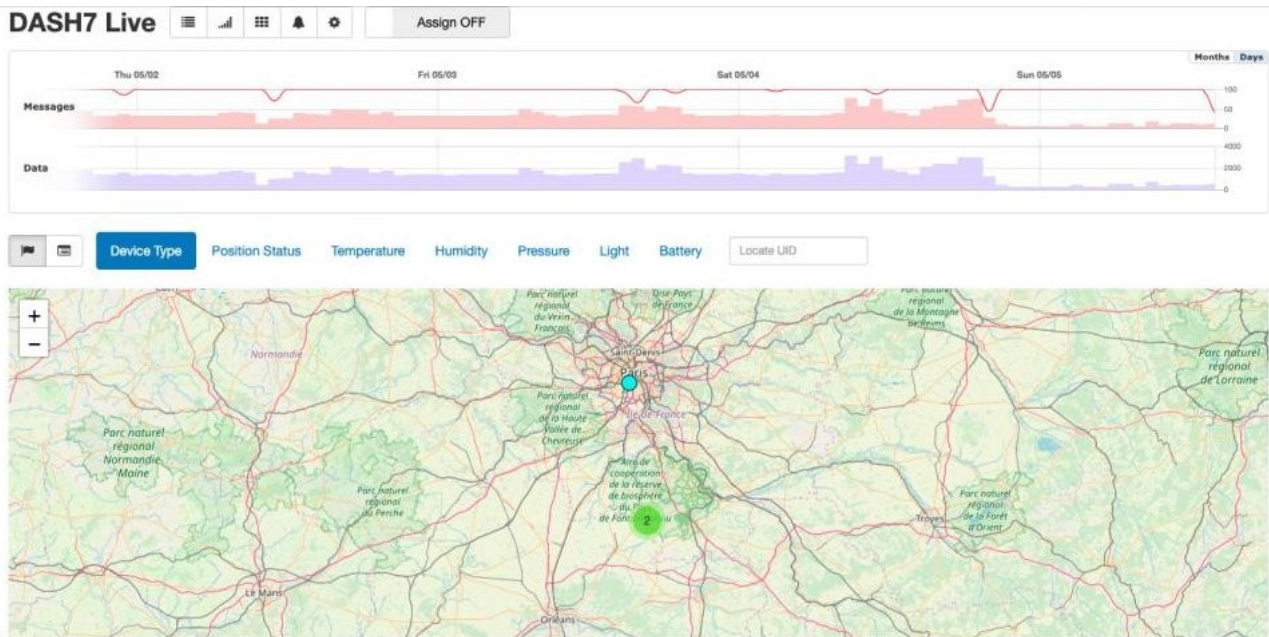
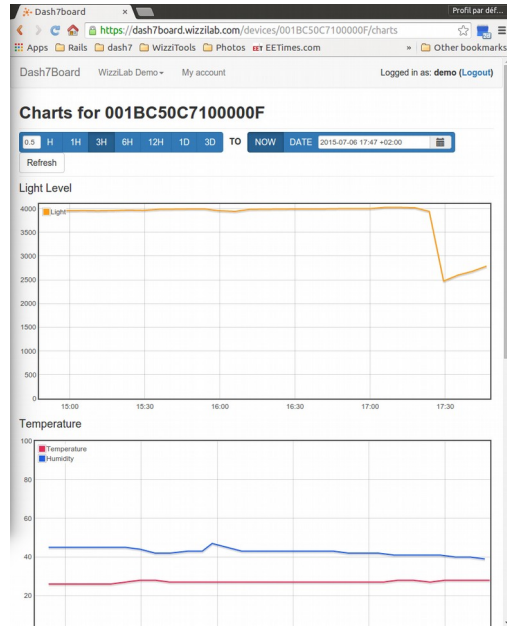
The WOLT can be used for efficient indoor tracking. It is also useful for identification due to its NFC & BTLE connectivity. The UWB ranging provides high localization accuracy up to 10 cm.



5.2 Ready to deploy

The WOLT is suited for proof of concept, pilot and volume applications. For DASH7 communication, WizziLab provides infrastructure for easy D7A network deployment. The WOLT-UWB seamlessly connects to the WizziLab's DASH7 Industrial IoT platform.

For details visit our website : www.wizzilab.com/products



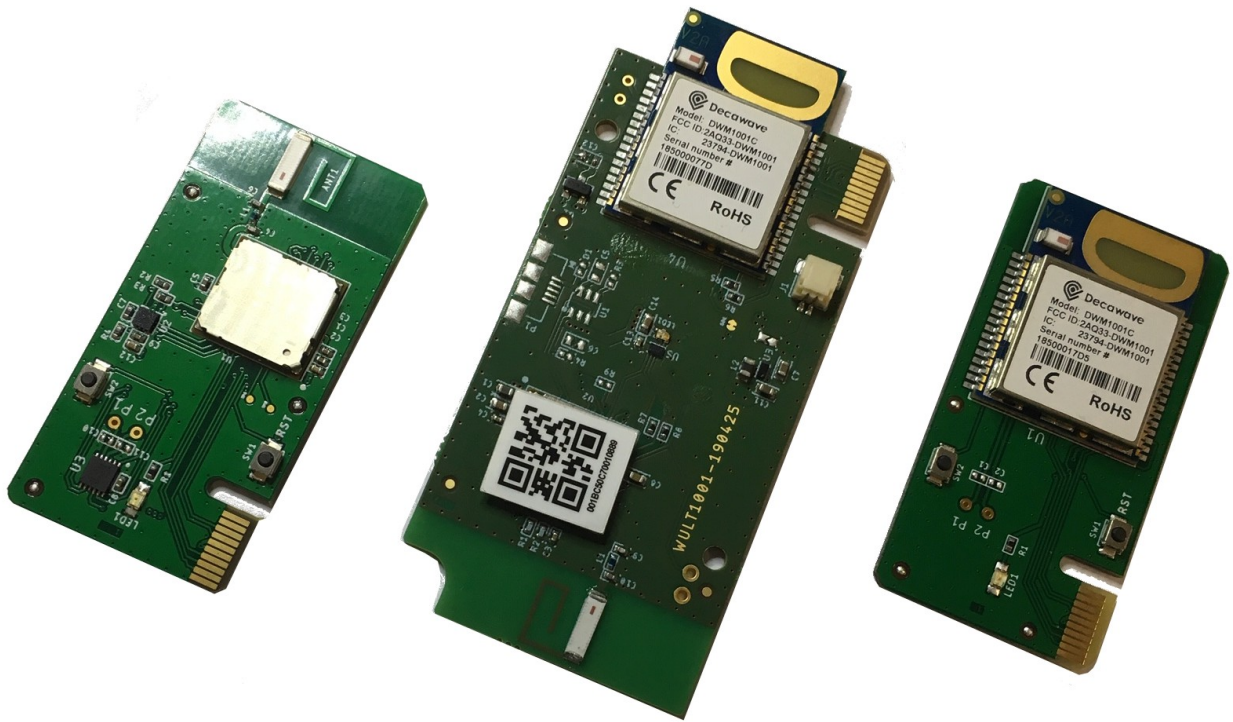
DASH7 Access Point (gateway) and Network Management Platform (<https://dash7board.wizzilab.com>)

5.3 Firmware

The WOLT is provided with highly configurable firmware, allowing to select beacon rates, beacon conditions (motion detection, ...) and ranging method (TWR / TDOA). Real-time downlink access over D7A may be enabled for static / dynamic configuration, FOTA and actuation (LED blinking). Identification over NFC and BTLE beaconing are available as well.

6 The WOLT Family

The WOLT trackers family also includes an ultra wide band tracker, WOLT-UWB and a dual mode UWB/FSK/LORA tracker.



WOLT-D7A, Combined WOLT-D7A-UWB and WOLT-UWB tags

For details visit our website : www.wizzilab.com/products

7 Ordering information

Contact us at : contact@wizzilab.com

Or visit our website: <http://www.wizzilab.com/products>

8 Revision history

Table 7. Document revision history

Date	Revision	Changes
2019-09-12	1.0	Document creation.